

# Magic Card Professional

## User Manual

Total Service s.r.o.

<http://www.magic-card.cz>

E-mail: [support@magic-card.cz](mailto:support@magic-card.cz)

## Table of Contents

System Requirements .....	1
1. Installation .....	3
2. Magic Card Settings .....	5
2.1 Set Protection.....	6
2.2 Set Parameters .....	8
2.3 Password.....	10
2.4 CMOS Recovery Setup.....	12
3. Show Buffer.....	14
4. Restore .....	15
5. Save Change .....	15
6. About .....	15
7. System Tray:.....	15
8. Hotkey .....	16
9. Uninstall.....	19
10. Contact Information.....	19

## System Requirements

Hardware:

- 80486 and above IBM compatible PC.
- Minimum 500 MB of free hard disk space
- 32MB of Memory
- One free PCI slot
- CD-ROM
- Color monitor

### Operating System Support:

- Windows 95 OSR2
- Windows 98/ME
- Windows NT4.0 with Service Pack 6
- Windows 2000
- Windows XP

### Before Installation:

1. Before installing, please run the SCANDISK and DISK DEFRAGMENTER utilities provided by Windows for best performance. Disable any anti-virus programs to avoid any possible conflicts.
2. If you have installed any similar System Restore product in the past, either hardware or software, please remove the card and all drivers supplied with it before installing Magic Card Professional.
3. Before installing new software, or executing backup functions, make sure it is virus free.

## 1. Installation

- 1.1 Turn off the computer and remove the case. Insert the Magic Card Professional into a free PCI expansion slot. Turn on the computer and go in to Windows. In Windows, run scandisk and Windows defrag utility first. Insert the Magic Card Professional installation CD into the computer's CD-ROM drive, and click-on **Install** to start installation. (If Autorun is disabled, select Run from the Start Menu on the Taskbar. Type E:\Setup.exe, where E: is the designated CD-ROM drive.) The Welcome message of Magic Card Professional Setup Wizard will then display. Click Next to continue. (Fig.1)

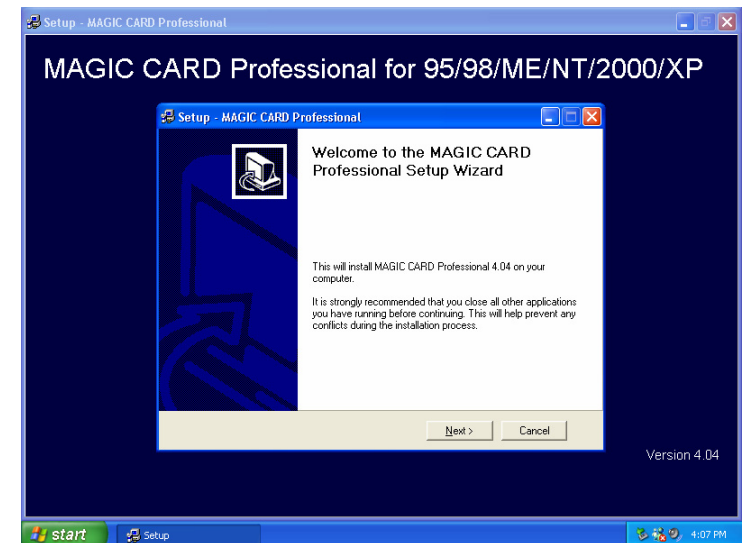


Figure 1

1.2 Select type installation: **Typical** or **Custom**, click **Install** to continue. (Fig. 2)

**Typical Installation** will install the program with the default setup and most common options. Recommended for most users. The default setting of Typical Installation is to protect Drive C by instant recovery on every reboot. **Custom Installation** allows users to setup the preferred options during the installation. Recommended for advanced users. Please refer to Chapter 2. Magic Card settings.

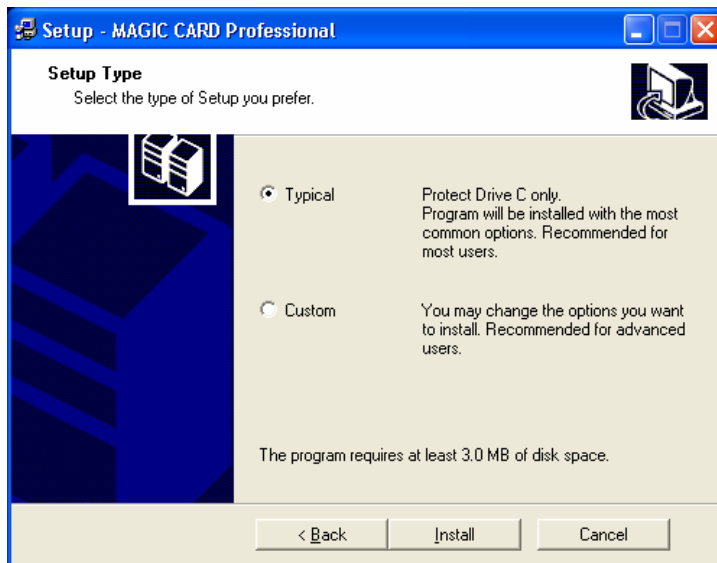


Figure 2

1.3 After a setup type is selected, you will be asked to restart your PC, click **Yes** to finish the installation and restart your computer to activate the program. Or click **No** to restart later. (Fig.3)

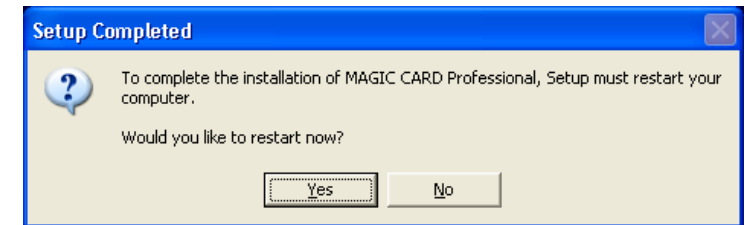


Figure 3

## 2. Magic Card Settings

Options can be setup during Custom Installation and can be accessed anytime by right clicking the Magic Card icon on the Windows Taskbar. (Fig. 4)

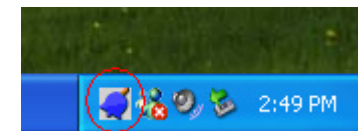


Figure 4

Main Menu appears in the following figure. (Fig.5) Click **Magic Card settings** and enter password in the dialog box that is displayed, click OK. (Default password is **Magic**.) All the setting in this menu go into effect after saving. Some settings are activated after computer restart.

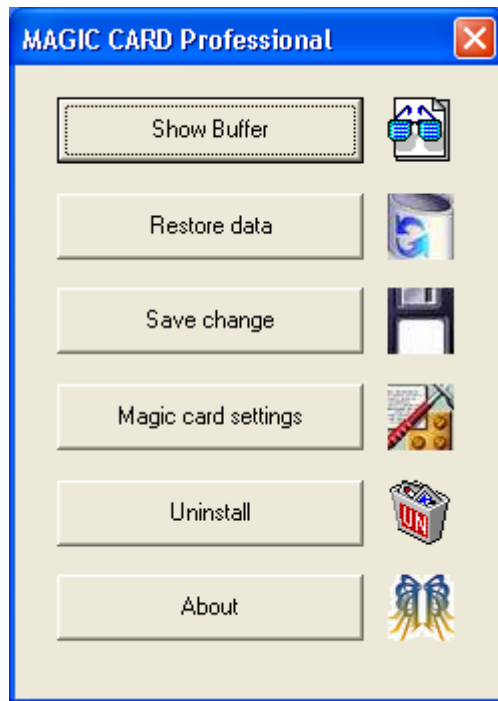


Figure 5

## 2.1 Set Protection

This menu displays the Disk Information, file system attributes, used space and protected status of each partition. Default setting of protected partition is Drive C. checking the check box will activate the protection. (Fig. 6)

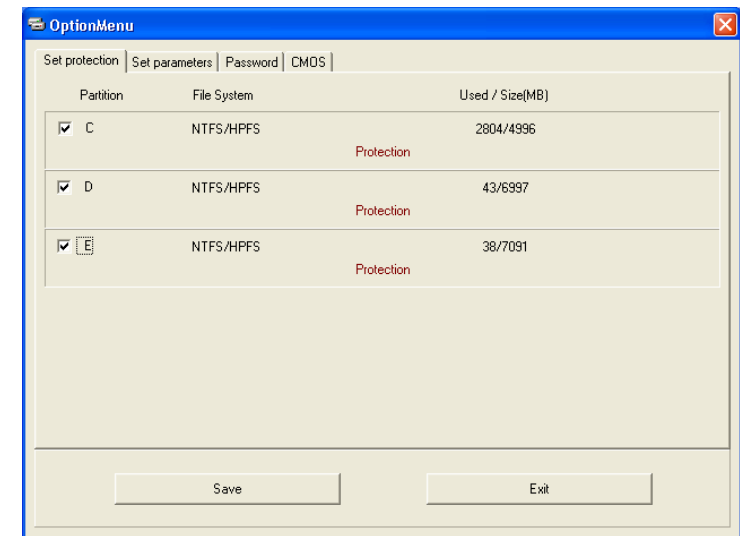


Figure 6

**Note:** Magic Card Professional can only protect the First physical Hard Disk.

## 2.2 Set Parameters

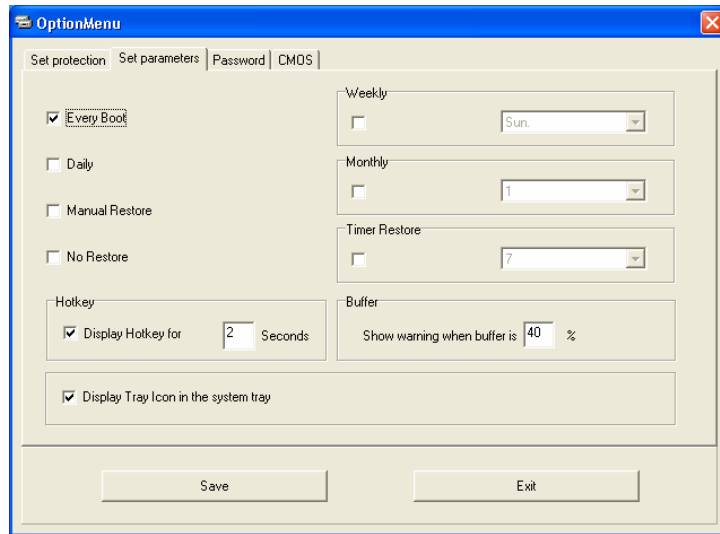


Figure 7

- 2.2.1 Every boot:** The system will be instantly restored to its original state or last backup on every reboot. **Default** setting for recovery mode is **Every Boot**.
- 2.2.2 Daily:** The system will be auto restored to its original status or last backup at the first boot of every day.
- 2.2.3 Manual Restore:** By Selecting this mode; all data and changes

made will be kept temporarily. The system will be restored to its original status through select <Restore data> function by right-clicking the Magic Card icon on the Windows taskbar. The changes will be reserved permanently through select <Save change> function by right-clicking the Magic Card icon on the Windows taskbar. Password is required on both selections. (Fig.5)

- 2.2.4 No Restore:** Disable Restore function.
- 2.2.5 Weekly:** The system will auto restore its original status or last backup at the first boot of given day (Sunday~Saturday) every week.
- 2.2.6 Monthly:** The system will auto restore original status or last backup at the first boot of a specified date (Date 1<sup>st</sup>~31<sup>st</sup>) every month.
- 2.2.7 Timer Restore:** The system will auto restore its original status or last backup according to the preset schedule.

**Note:** When a Restore Mode is changed, the following windows box will pop up. Select **Restore** to restore its original status, or select **Backup** to reserve the changed data (Fig. 8)

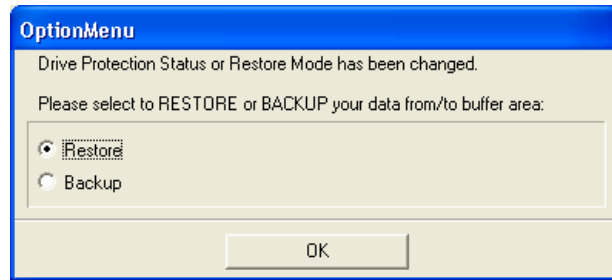


Figure 8

- 2.2.8 Hotkey:** It is possible to predefine the time to display hotkey <Home> on every start-up. 1~99 seconds are available. Default setting is 2 seconds.
- 2.2.9 Buffer:** When the buffer is used up to the predefined percentage, a warning box will display to remind you that the buffer is full. Default setting is 40%.
- 2.2.10 Display tray icon in system tray:** Selecting this check box will display Magic Card tray icon on Windows taskbar.

The default Password is **Magic**. UP to 10 characters are available to setup Password. (Fig. 9)

**Note:** The Password is to ensure the security of Magic Card Professional. The Password can be used for all functions of Magic Card. Please keep a copy of the Password in a secure place.

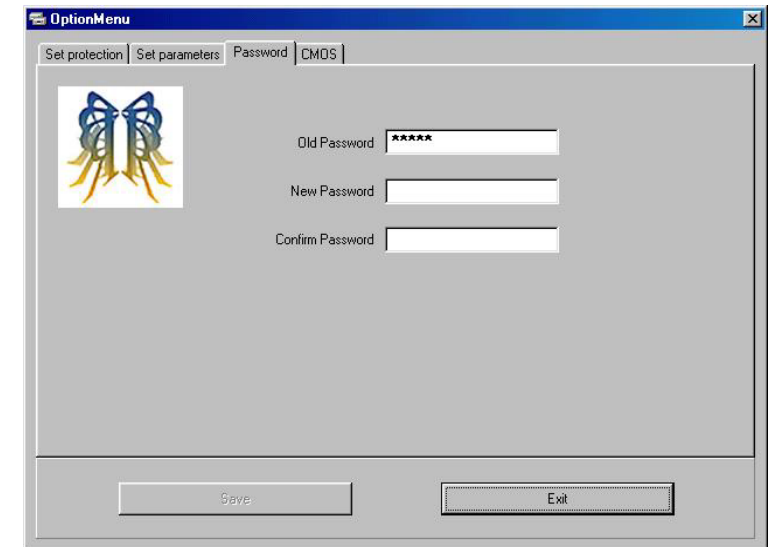


Figure 9

## 2.3 Password

## 2.4 CMOS Recovery Setup

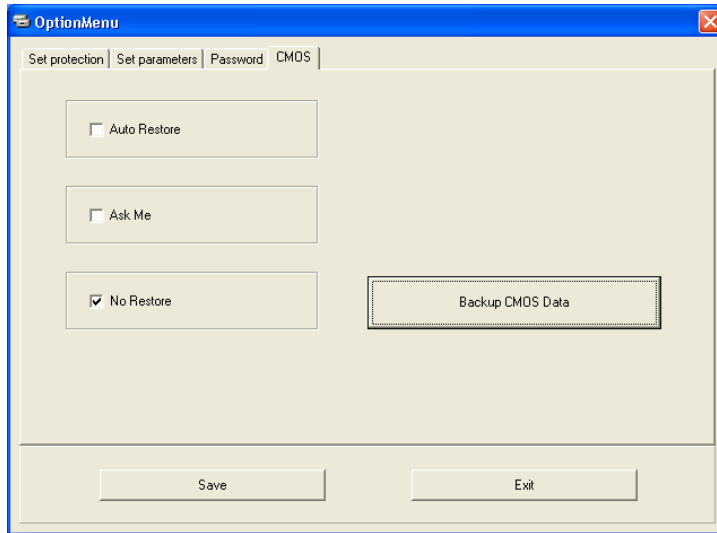


Figure 10

### 2.4.1 CMOS - Auto Restore:

**Enable:** Protects CMOS data from being changed. System will auto restore CMOS data when this check box is enabled. (Fig. 10)

### 2.4.2 CMOS – Ask Me

**Enable:** Protects CMOS data from being changed. The System will pop up a selection menu upon booting for you to execute **Restore**, **Backup** or **Analyze** when CMOS data is changed. (Fig. 11) **Analyze** CMOS data will compare the current CMOS

data and the saved CMOS data on the hard drive for differences.

**Note:** System will reboot twice to proceed with CMOS analysis.

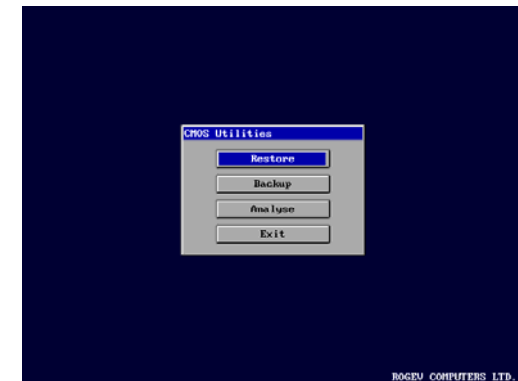


Figure 11

### 2.4.3 CMOS – No Restore

CMOS data can be changed any time if this check box is enabled. **Default** setting is enabled. (Fig. 10)

**Note:** To change CMOS restore mode from <No restore> to <Auto restore>, please execute **CMOS Backup** first to make sure your CMOS data is the latest update. (Fig. 10)

### 3. Show Buffer

#### Show Free Buffer

Clicking on Show Buffer, will display the information of Restore mode, buffer size and free space in buffer. (Fig. 12)

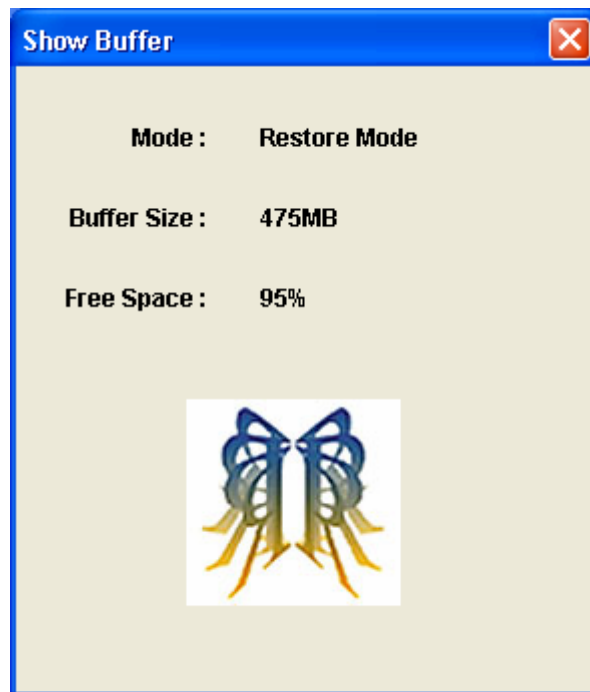


Figure 12

### 4. Restore Data

Restores last configuration instantly. A Password is required for this action. The system will reboot to restore.

### 5. Save Change

Executes backup function Instantly. A Password is required for this action. The System will reboot to backup.

### 6. About

Displays information of Magic Card Professional hardware versions.

### 7. System Tray:

When the Magic Card icon is Blue, the card is in Restore mode. Moving the mouse over the Magic Card icon, will show the protection status and Free Space percentage of buffer. (Fig.13)

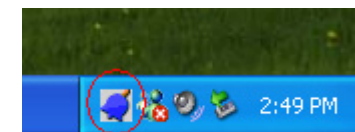


Figure 13

When Magic Card icon is Red, it is in No Restore mode. Moving the mouse over Magic Card icon, will show the protection status. (Fig.14)



Figure 14

## 8. Hotkey

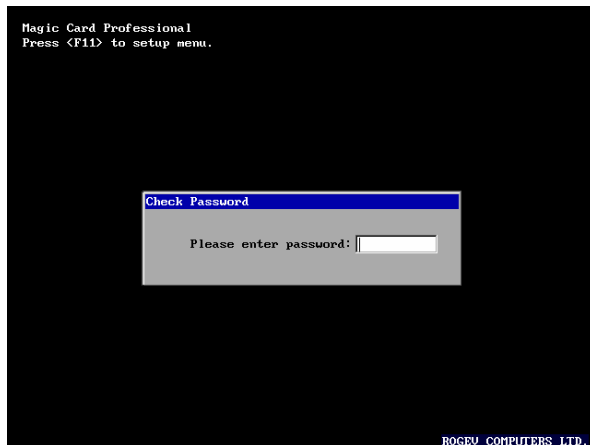


Figure 15

- 8.1** When Magic Card has completed its installation, **Magic Card Professional Press <F11> to setup menu** message will be displayed on the screen on every reboot. (Fig. 15) This hotkey is mainly used for troubleshooting or if you encounter difficulties entering Windows.

- 8.2** Press <F11> to enter the password in the dialog box . Click OK to enter Setup menu. Default password is **Magic**. (Fig. 16)

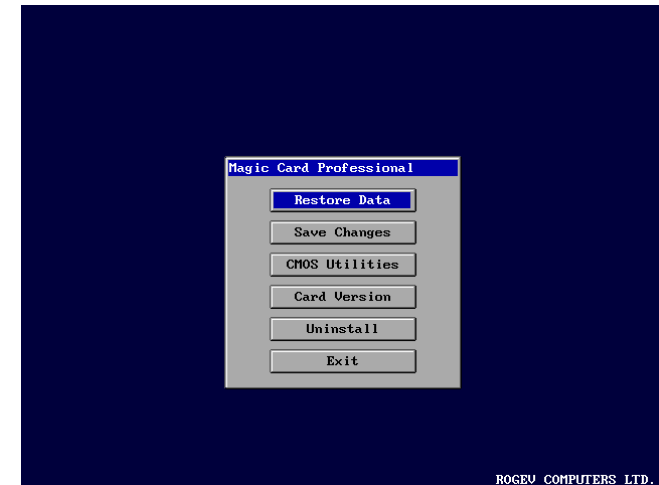


Figure 16

The following options will appear.

- 8.2.1 Restore Data:** Executes Restore function instantly. The Restore function restores your last backed up status. (Fig.16)
- 8.2.2 Save Changes:** Executes Backup function instantly. This option is visible only when the Restore Mode was set as **Manual Restore**.

### 8.2.3 CMOS Utilities:

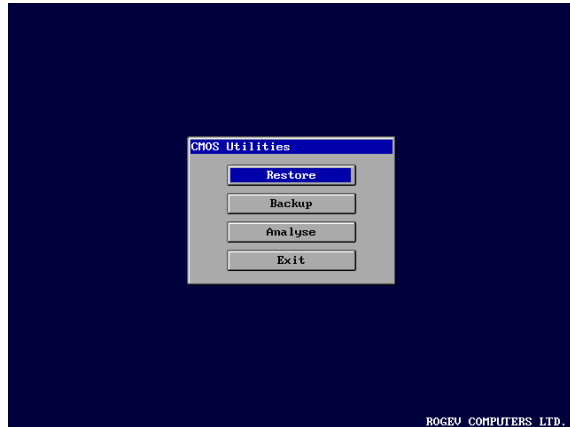


Figure 17

**Restore:** Restore CMOS data when changed.

**Backup:** To Backup CMOS data when updated.

**Analyse:** Analyze CMOS data compares the current CMOS data and the saved CMOS data on the hard drive for differences.

**Exit:** Exits CMOS tools.

**8.2.4 Card Version:** Displays Magic Card version information. (Fig.16)

**8.2.5 Uninstall:** Removes Magic Card from your computer. (Fig. 16)

**Note:** Always uninstall Magic Card from Windows.

**Exit:** Exits Magic Card setup menu. (Fig.16)

## 9. Uninstall

Uninstalling Magic Card from your computer will not cause any damage to your hard disk. All data and partitions will be restored to their original state when Magic Card was installed or when data was last backed up.

1. Insert Magic Card installation CD.
2. Click-on Uninstall and enter password.
3. System will reboot and (Fig.18) will appear
4. When the Uninstalling process completes. Select Reboot Now or Power off your computer.
5. Turn off the computer and remove the Magic Card.

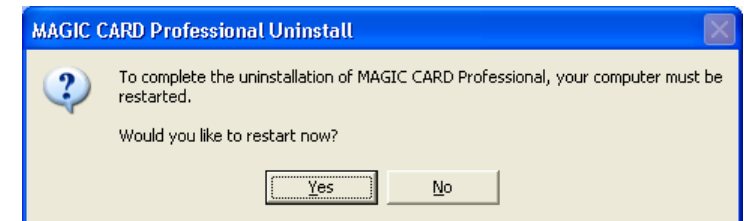


Fig.18

## 10. Contact Information

Total Service s.r.o.

<http://www.magic-card.cz>, <http://www.totalservice.cz>

